

# Chief Mountain OHV Trails

## Red Rhyolite Trail

This easy scenic trail takes you through dry washes, pinyon-juniper stands, and classic Mojave Desert vegetation. A roundtrip loop starting and ending at the trailhead takes you 13 miles.

## Grey Dome Rim Trail

This moderate-hard trail combines scenic views of pinyon-juniper with large boulder fields, tight washes, and breathtaking views of the Burnt Springs Range and Dry Lake Valley. A 17 mile loop exists when your return on the Silver State Trail back to the trailhead.

## Silver State Trail

240 miles of designated OHV trails make this the perfect choice for riders looking for long distance scenic tours through the range and valley landscape of Eastern Nevada's High Desert. Access to towns and highways exist off of the main Silver State Trail. Please be sure to bring adequate fuel, food, and water for your trip. Gas stops are not available along the trail.

## Legend



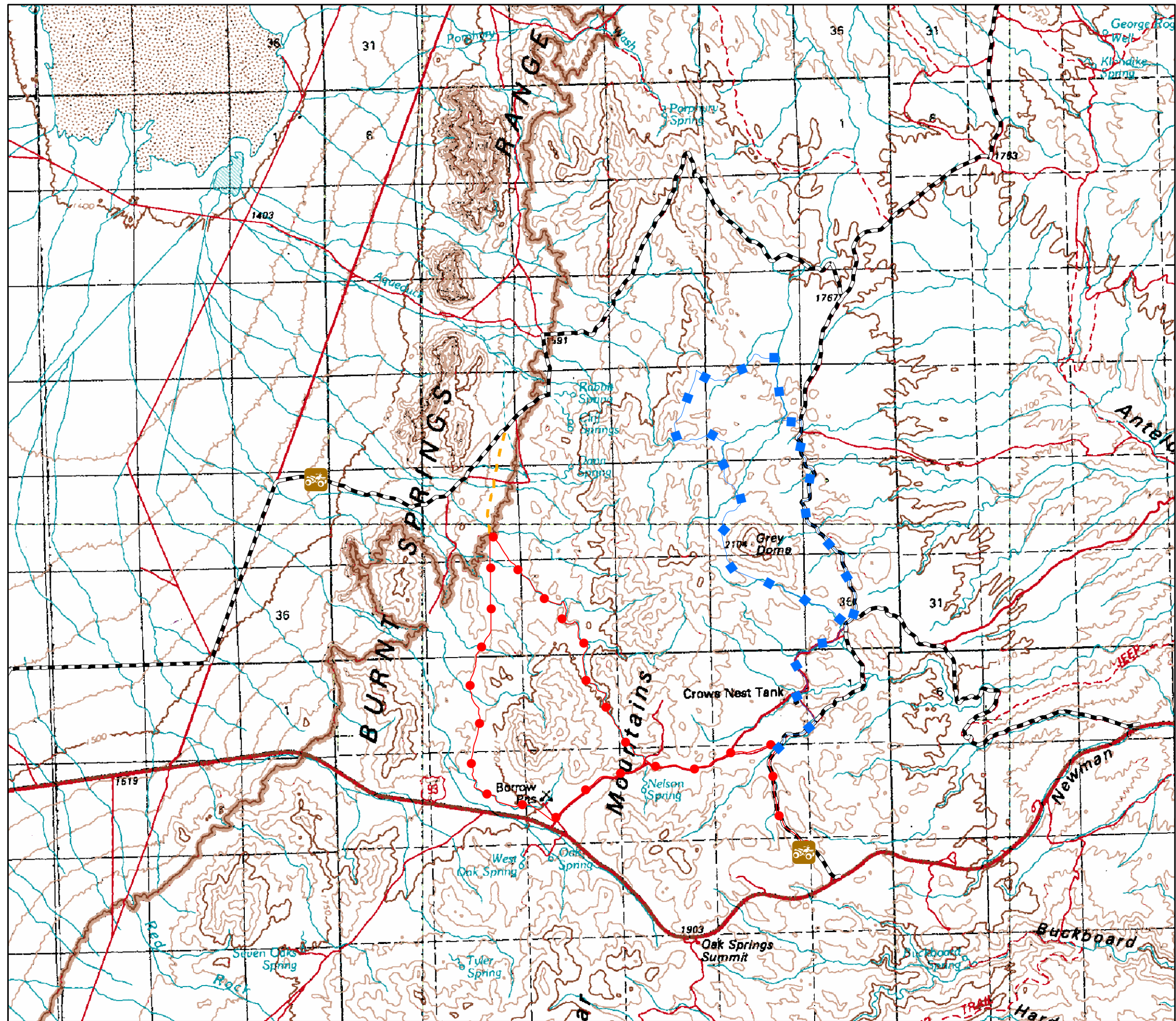
Trailhead

●●●● Red Rhyolite Trail

■ ■ ■ ■ Grey Dome Rim Trail

— — — — Connector to Silver State

— — — — Silverstate OHV Trail



No Warranty is made by the Bureau of Land Management as to the accuracy, reliability, or completeness of these data for individual use or aggregate use with other data.